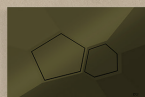


OLI



NEW SOLUTIONS 2025
GENERAL CATALOGUE

Inspired by water...

OLI120 PLUS

In-wall cisterns

ENVIRONMENTAL PRODUCT DECLARATION (EPD)

Class A++, stands out
for high environmental
performance.



BLOCK



SAVE TIME, SAVE MONEY

Robust EPS coating that completely encloses
the cistern and allows for faster installation

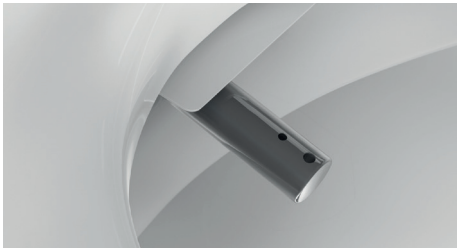


SANITARBLOCK



WASHLET PRE-INSTALLED BY DEFAULT

High compatibility with smart
toilets on the market



SANITARBLOCK NORDIC

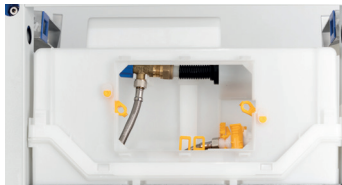


FREE-STANDING NF



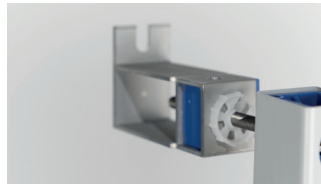
WATER CONNECTION

all accessories included



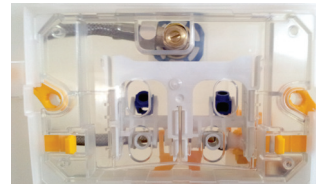
SPECIFIC FOR THE SCANDINAVIAN MARKET

Developed with technical advice
from the market



EASY MAINTENANCE

Quick access to the inside of
in-wall cistern



**SAVES UP TO
9L OF WATER
PER DAY**



SPECIFIC FOR THE FRENCH MARKET

Developed according to the market
needs



OLI70 PLUS



*Combined with LAKE toilet

MINIMUM THICKNESS



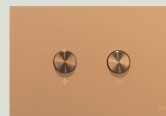
A slimmer in-wall cistern saves you space, just with 9cm depth—sleek and embraced. Modern design and easy installation.



NEW FINISHES MORE COMBINATIONS

BLINK matte flush plates

Brushed copper matte



Brushed gold matte



Brushed white gold matte



Brushed matte



Brushed gun metal matte



OLI70 PLUS

In-wall cistern



MAINTENANCE

Protection plate with levers block for quick and easy maintenance.



PLUS

Saves up to 9l of water per day



NOISE LEVEL

Class I noise level



HEIGHT ADJUSTABLE

0 to 300mm



FLUSH PLATE

Wide range of flush plates and actuators: mechanical, pneumatic



FLUSH VOLUME

Dual flush: 6/3L.
Adjustable to 4/2L or 4.5/3L.



SUPPORTS UP TO 400KG

COMPLETE RANGE



REGENERATED RAW MATERIAL

Less ambient impact

SHOWER TOILET

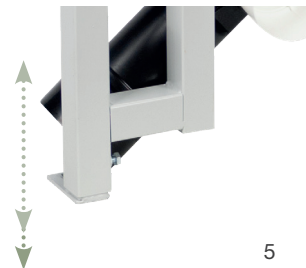
Compatible with multiple washlet connections

MAINTENANCE

Protection plate with levers block for quick and easy maintenance. QR-code to access all technical information.

EASY INSTALLATION

Height adjustable 30cm, underfloor heating



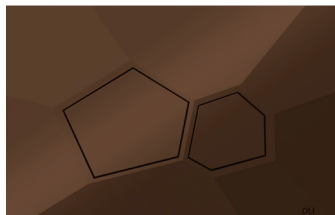
VORONOI



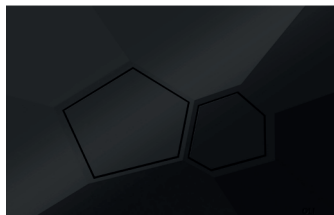
Financiado pela
União Europeia
NextGenerationEU

RECUPERAR
PORTUGAL

Burnt Terra



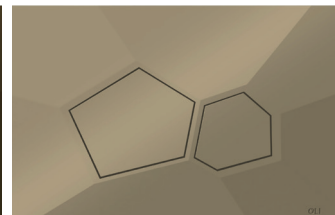
Black Dark Carbon



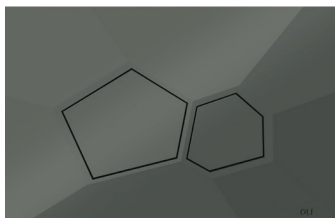
Organic Gold



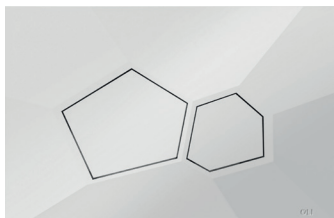
Arabic Stone



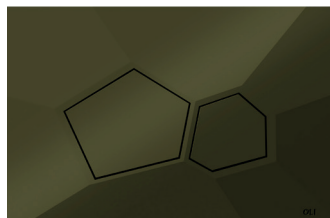
Urban Concrete



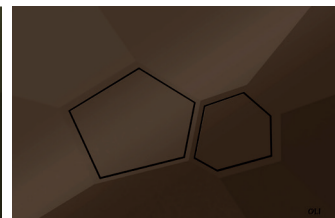
White Pure Glacier



Forest Terra

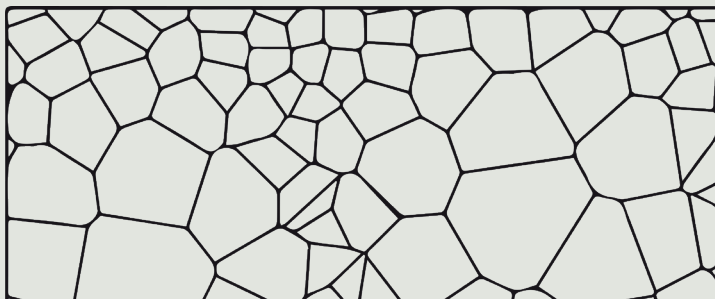


Raw Umber



WHY VORONOI?

OLI's VORONOI flush plate is a celebration of design inspired by polygonal shapes, bringing the fluid, organic geometry of the Voronoi pattern into the bathroom. Its two-dimensional and faceted form, gives it a **unique design and a sculptural presence** that transcends functionality, making it a standout element in contemporary architectural projects.



INNOVATION & SUSTAINABILITY

Use 20% less raw material

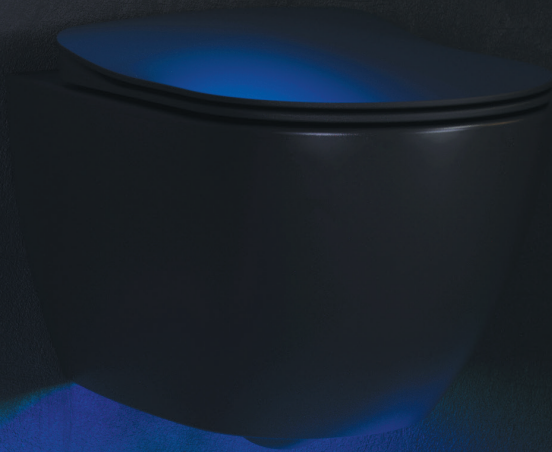
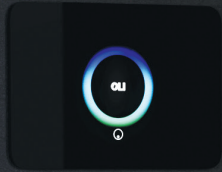
Its exhaustive and detailed development process guarantees the same resistance, making it a statement of innovation and sustainability.

BIOBASED ABS

Uses recycled raw materials from biological sources, significantly reducing its environmental impact.

This material, besides its sustainable feature, offers a smooth, high-quality finish that makes it easy to clean and preserve visual sophistication.

HALLO PRO



PERFECT COMBINATION

HALLO

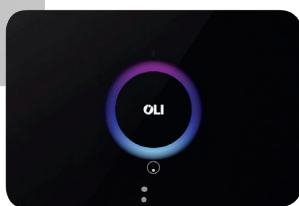


LAKE
wall-hung

White



Black



SUSTAINABLE

Saves water up to +50%

White



Black matte



AMBIENT LIGHTING

under the toilet

USAGE DETECTION

Sensorised toilet

CONNECTIVITY AND MONITORING VIA THE OLI CONNECT APP

WATER WASTE & COST

False flush prevention



Public spaces

MAINTENANCE & OPERATION

Clog detection and overflow prevention

EXCELLENCE

Automatic flush and touchless control

KEY

Electronic / Mechanical
flush plate



ANTI-THEFT

Security

STAINLESS STEEL

High resistance and durability

ELECTRONIC & MANUAL ACTUATION*

Infrared sensor with manual override

ANTI-FINGERPRINT



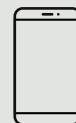
Brushed chrome



Black matte



CONNECTIVITY AND MONITORING VIA THE OLI IR APP



App to adjust the default
settings, monitor and
collect data



* if it is necessary.

KEY

Mechanical flush plate



Brushed chrome



Black matte



ANTI-THEFT

Security

STAINLESS STEEL

High resistance and durability

USER FRIENDLY

Inclusive, intuitive, easy to activate and safety



Public spaces

HYGEA



MULTIPLE FINISHES

White



White matte



Grey matte



Sand matte



Anthracite matte



Black matte



SEAT & COVER

Soft-close seat & cover
with the main bidet
functions integrated



ELECTRONIC BIDET

Easy access without
compromising toilet use.



**FIXING AND INSULATION
PLATE**



RIM-OFF

Greater hygiene and
easy to clean

SMART TOILET

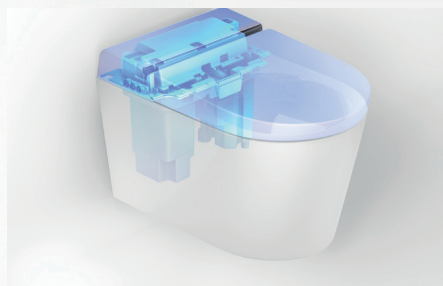
hygienic and innovative modular system

ELECTRONIC BIDET

can be installed or replaced very easily
(like a cartridge)

REMOTE CONTROL

allows customised operation



LAKE



White

White pearl matte

Cappuccino matte

Black matte



White



White pearl matte



Cappuccino matte



Black matte

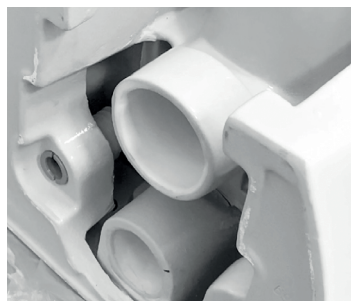


RIM-OFF TOILET
without rim

Sewer and water connections with
GLAZED FINISH

Seat cover with
CLIPP-OFF SYSTEM
for perfect cleaning

SOFT-CLOSE SYSTEM



COUNTERTOP WASHBASINS



COUNTERTOP WASHBASINS

Modern shapes & finishes



SERENNA



White



Cappuccino matte



Black matte

CE MARKING:

EN 14688

FINE FIRECLAY

highly durable and resistant material



100% NATURAL MATERIAL

Eco-friendly and recyclable

VIOLET



White



White pearl matte



Cappuccino matte



Black matte

PERFECT DESIGN HARMONY

Seamlessly integrates with Lake and Balance collections;

BREEZE



White



White pearl matte



Cappuccino matte



Black matte

OPTIONAL

Open valve (without overflow)

Material: brass

SUN



White



White pearl matte



Cappuccino matte



Black matte



OCEAN



High Basin Mixer



Basin Mixer



Bidet Mixer



Rainshower



White Gold



Gold



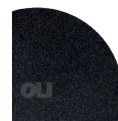
Copper



Gun Metal



Polished chrome



Black matte

Shower Mixer*



Bathtub Mixer*



* Available only in Polished chrome and black matte

DURABILITY & RESISTANCE

Brass material

WATER SAVE AERATOR

Bream & Leed Projects

The perfect match with
OLI FLUSH PLATES



BALANCE



Black

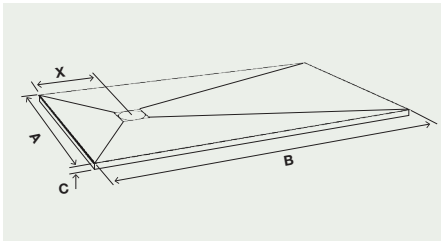
White



A	B	C	X	A	B	C	X
700	900	24-26	300	800	800	24-26	400
	1000		300		1000		300
	1200		350		1200		350
	1400		400		1400		400
	1500		400		1500		400
	1600		450		1600		450
	1700		450		1700		450
	1800		500		1800		500
	2000		500		2000		500
	2200		600		2200		600
900	900	24-26	450	800	900	24-26	450
	1000		300		1000		300
	1200		350		1200		350
	1400		400		1400		400
	1500		400		1500		400
	1600		450		1600		450
	1700		450		1700		450
	1800		500		1800		500

DIMENSIONS

Can be cut to size



TEXTURE

Stone

COMPOSITION

Exterior coating in high-resistance sanitary gel coat; Inner mineral load and colored resin mass;

INCLUDES

Ø90 Valve



EASY ACCESS

Extra-flat shower tray

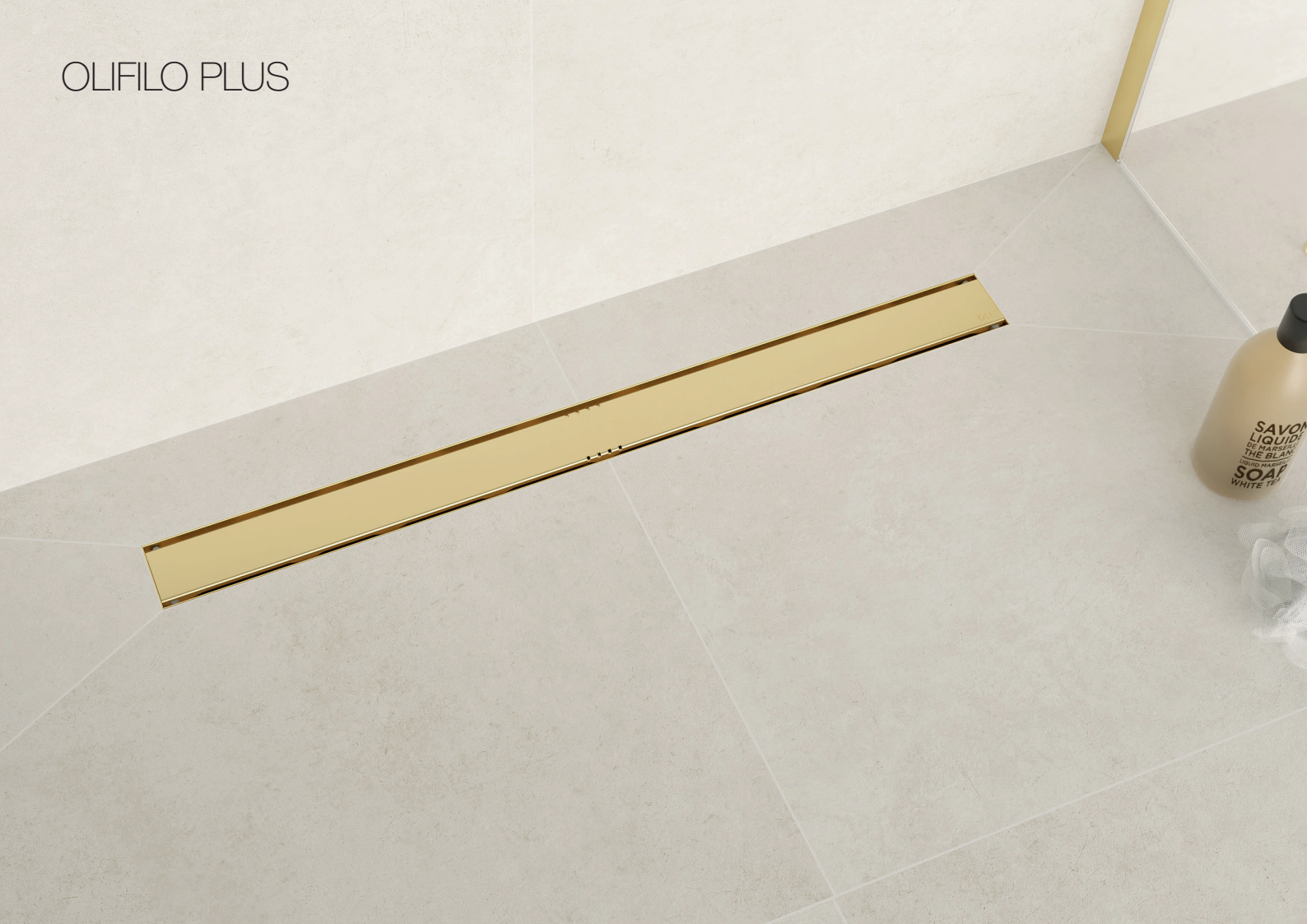


GRATE

Stainless steel grate AISI 304;



OLIFILO PLUS



Lacquered black stainless steel

Brushed stainless steel

Brushed stainless steel gold PVD

Ceramic



OLIFILO PLUS

Shower drain



100% WATERPROOFING*

Easy-to-install membrane, thanks to its flexibility and lightness.

TERMO-SEALED MEMBRANE ADAPTER



360° ADJUSTABLE

FINISHES

Brushed stainless steel, matte lacquered black, gold PVD and ceramic.

2-IN-1 ADAPTER:

Factory thermo-sealed membrane, ensuring enhanced waterproofing. Easier connection to the siphon.



IDEAL FOR PEOPLE WITH REDUCED MOBILITY

SLOPE GRADIENT

Ensures perfect water drainage.

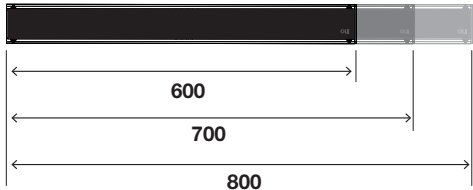


HAIR FILTER

Easy access for cleaning.



AVAILABLE IN SIZES:



OLIFILO ADVANCED



Black anodized aluminium



Chrome anodized aluminium



OLIFILO ADVANCED

Shower drain



100% WATERPROOFING

Easy-to-install membrane, thanks to its flexibility and lightness.

TERMO-SEALED MEMBRANE ADAPTER



FINISHES

Chromed and black anodised

MATERIAL

Aluminium 6063 T6



360° ADJUSTABLE

2-IN-1 ADAPTER

Factory thermo-sealed membrane, ensuring enhanced waterproofing. Easier connection to the Siphon .



IDEAL FOR PEOPLE WITH REDUCED MOBILITY

CUSTOMIZABLE SOLUTION

Adjustable size on site



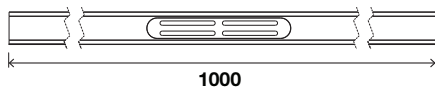
EASY-TO-REMOVE GRATE

Filter easy access for cleaning.



HAIR FILTER

Easy access for cleaning



GENERAL CATALOGUE 2025 | 2026



RECUPERAR
PORTUGAL

Save paper. Scan instead.



OLI

Inspired by water for 70 years, OLI is now the largest producer of cisterns in Southern Europe and is present in bathrooms all over the world. Constantly growing and looking to the future, OLI already has 6 commercial & logistical subsidiaries to strengthen its position in the market.

OLI-Sistemas Sanitários, S.A.
Travessa do Milão, 11, Esgueira
3800-314 Aveiro, Portugal

T (+351) 234 300 200
F (+351) 234 300 212
www.oli-world.com
export@oli-world.com

Inspired by water...