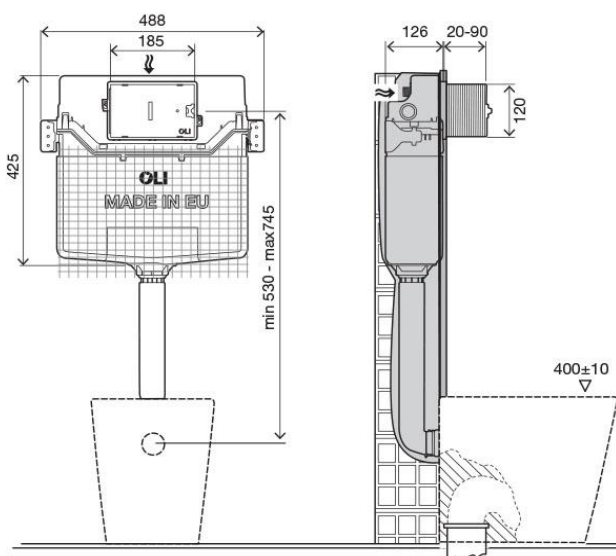


Technical Sheet

OLI120 Plus Eletronic



Product Identification

154075

- OLI120 Plus Eletronic

Definition and Application

- Flush cistern to be installed inside the wall and used in combination with floor standing sanitary applications
- Compatible with all floor mounted WC pans
- Exclusive to electronic control plates by infrared: Electra III; Electra II; Electra I

Technical Features

- Dual flush in-wall cistern 6/3 litres
- 126mm thickness
- Electronic actuation
- Equipped with Azor Plus Inlet Valve, with delayed refilling (saves up to 9 litres of water per day) and silent according to the NF standard category Class I
- Working pressure from 0,1 to 16 bar
- Resistance to atmospheric humidity (Hr <90%).
- Polypropylene (PP) cistern highly resistant and inalterable to thermal stress
- CE EN 14055 marking CL1
- According to DIN/NF/KIWA standards
- Supplied with anti-condensation lining
- Net for easier mortar adhesion

Accessories

- 1 Flush pipe ø55 x 360
- 1 Seal for flush pipe ø 45
- 1 Protective box
- 1 G ½+stop valve

Millimetres measures

- 1 Protection sponge for the stop valve
- 2 Metal plates for fixation
- 1 WC connection pipe ø45 x 180

Warranty

- Ten (10) years warranty according to the general selling terms, starting from the purchase date of the product.
- If the product is not correctly installed the warranty is not valid

Observations

- There are available similar products. For more information please consult our Sanitary Installation Systems catalogue or our site www.oli-world.com