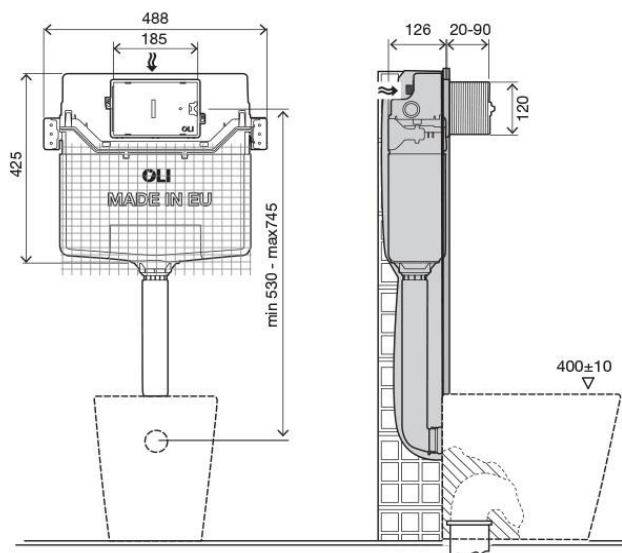


Technical Sheet

OLI120 Plus Mechanic OLIpure



Product Identification

152970

- OLI120 Plus Mechanic OLIpure

Definition and Application

- Flush cistern to be installed inside the wall and used in combination with floor standing sanitary applications
- Flush cistern with interior cleaning system for WC pan
- Compatible with all floor mounted WC pans

Technical Features

- Dual flush in-wall cistern compatible with dual flush actuators (Narrow and Glam) 6/3 litres (adjustable to 4/2 and 7/3)
- 126mm thickness
- Mechanic actuation
- Equipped with Azor Plus Inlet Valve, with delayed refilling (saves up to 9 litres of water per day) and silent according to the NF standard category Class I
- Working pressure from 0,1 to 16 bar
- Resistance to atmospheric humidity (Hr <90%).
- Polypropylene (PP) cistern highly resistant and inalterable to thermal stress
- EN 14055 marking CL1
- Other versions compliant with: WRAS/NF/KIWA/BELGAQUA standards
- Supplied with anti-condensation lining
- Net for easier mortar adhesion

Millimetres measures

OLIpure System

- Simple refilling system through a control plate of the cistern
- Compatible with all the existents detergent on the market (except those containing hydrochloric acid) *
- Storage capacity:450ml

Accessories

- 1 Flush pipe ø55 x 360
- 1 Seal for flush pipe ø 45
- 1 Protective box
- 1 G ½" stop valve
- 1 Protection sponge for the stop valve
- 2 Metal plates for fixation
- 1 WC connection pipe ø45 x 180

Warranty

- Ten (10) years warranty according to the general selling terms, starting from the purchase date of the product.
- If the product is not correctly installed the warranty is not valid

Observations

- There are available similar products. For more information please consult our Sanitary Installation Systems catalogue or our site www.oli-world.com

Is recommended the use of chlorine-free liquid detergents with a viscosity between 150 and 300 cp (at 20 ° C)
cp* is a unit of measure of viscosity, it reads "centipoise"