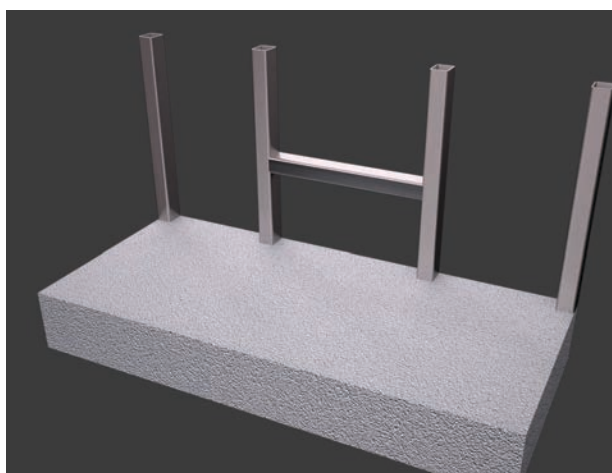
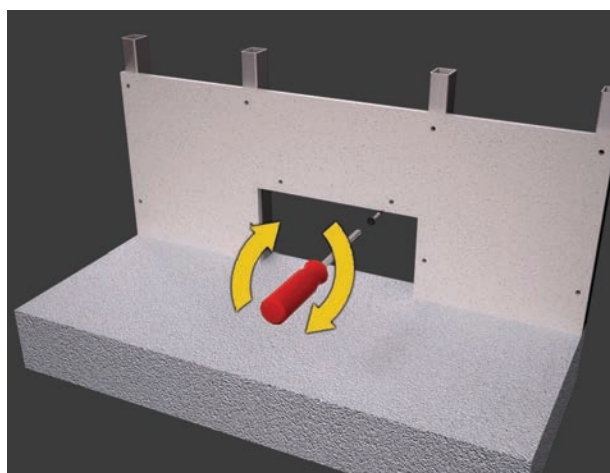


1



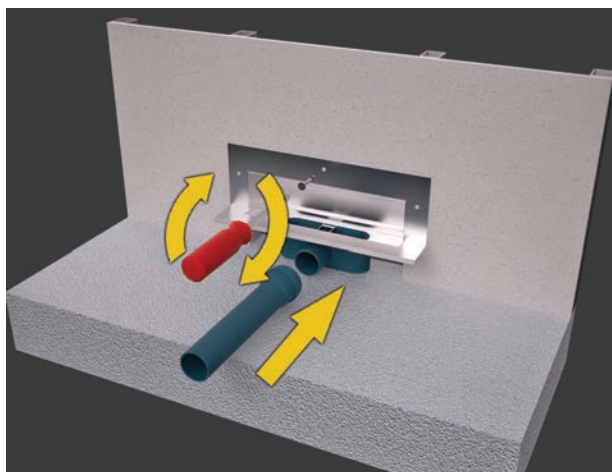
PT Preparar a construção da parede
EN Prepare the construction of the wall
IT Preparare la costruzione del muro
DE Vorbereitung der Konstruktionswand

2



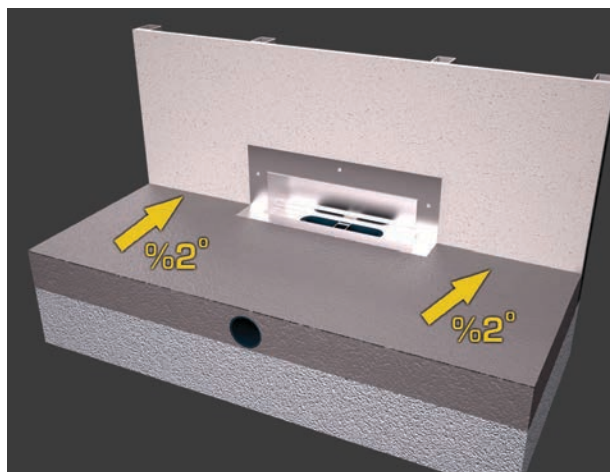
PT Montar a parede nos perfis
EN Build wall around the periphery
IT Montare la parete nei profili
DE Wandmontage auf Profile

3



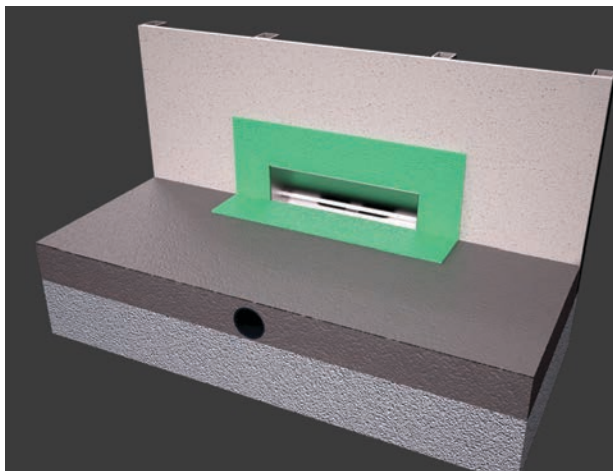
PT Aparafusar o sistema e ligação dos tubos
EN Using the screws provided, install the system and connect the pipes
IT Avvitare il sistema e collegamento dei tubi
DE Verschraubung der Anschlusssysteme der Rohrleitungen

4



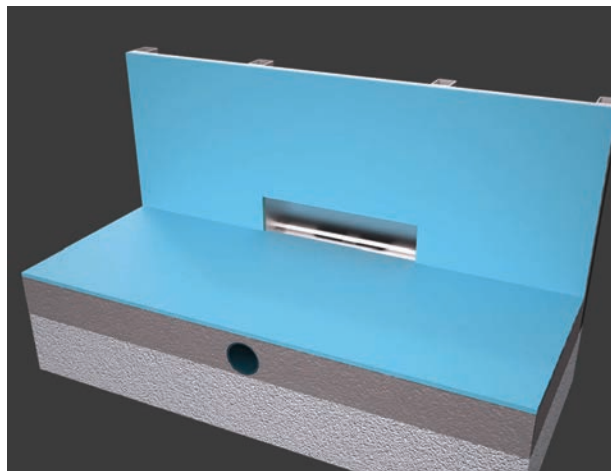
PT Realizar o enchimento com 2%-3% de inclinação
EN Apply the filler with a 2%-3% inclination
IT Effettuare il riempimento con 2% -3% di pendenza
DE Füllung mit einer Neigung von 2%-3% anbringen

5



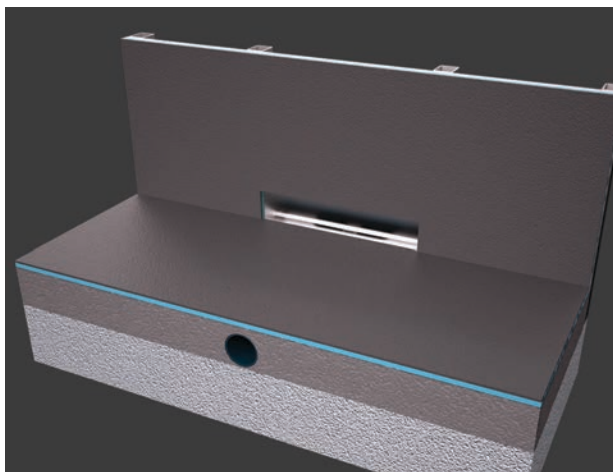
- PT Aplicar a membrana impermeabilizante
 EN Apply the waterproof membrane
 IT Applicare la membrana impermeabilizzante
 DE Dichtmembrane anbringen

6



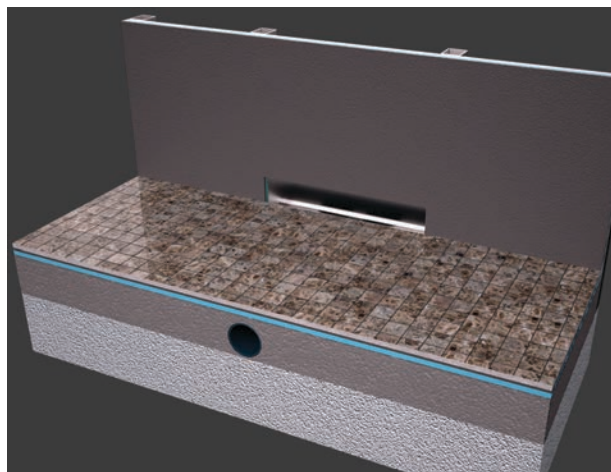
- PT Aplicar a tela líquida impermeabilizante na parede e pavimento
 EN Apply waterproof solvent on walls and pavement
 IT Applicare la banda liquida impermeabilizzante nella parete e nel pavimento
 DE Flüssige Dichtfolie an Boden und Wand anbringen

7



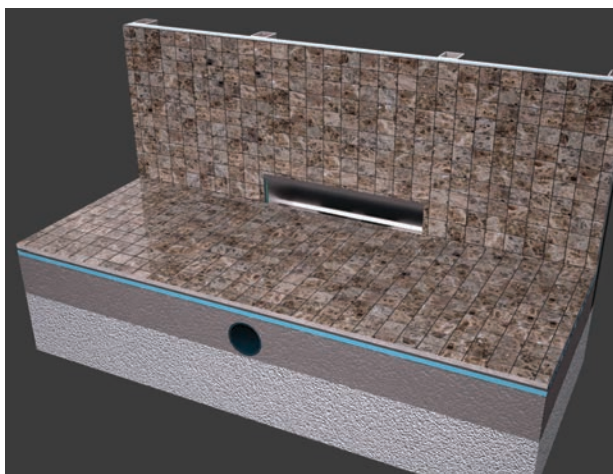
- PT Aplicar o cimento-cola
 EN Apply the thinset
 IT Applicare il cemento colla
 DE Fliesenkleber aufbringen

8



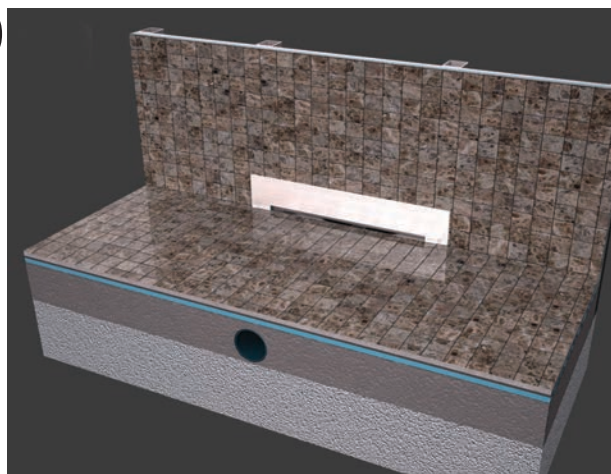
- PT Aplicar o revestimento no pavimento
 EN Apply the floor tiles/surface
 IT Applicare il rivestimento nel pavimento
 DE Fliesen am Boden anlegen

9



- PT Aplicar o revestimento na parede
 EN Apply the wall tiles/surface
 IT Applicare il rivestimento nel muro
 DE Fliesen an der Wand anlegen

10



- PT Montar a grelha frontal em aço inox
 EN Install the stainless steel grid
 IT Montare la griglia anteriore in acciaio inossidabile
 DE Frontaler Edelstahlrahmen montieren