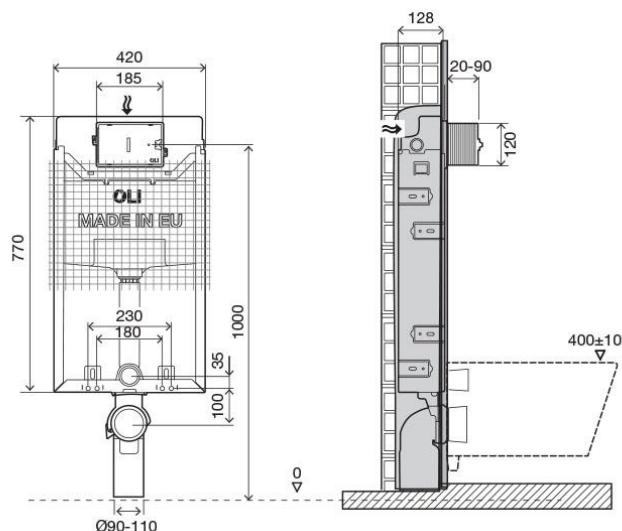


Technical Sheet

OLI120 PLUS



Product Identification

878844

- OLI120 PLUS cap Hydroboost Simflex

Definition and Application

- Pre-assembled structure for setting in masonry walls, to installation of wall-hung sanitary appliances
- The Hydroboost technology enables energy to be generated as waters enters in the cistern, and requires no connection to the power grid or the replacement of batteries
- Compatible with all wall-hung WC pans

Technical Features

Structure

- Metal, galvanized, corrosion resistant

Cistern

- Dual flush 6/3 litres
- Electronic actuation
- Working pressure from 0,1 to 16 bar
- Dedicated regulator for 6L/min filling flow rate
- Resistance to atmospheric humidity (Hr <90%).
- Polypropylene (PP) cistern highly resistant and inalterable to thermal stress
- EN 14055

- Equipped with Azor Plus Inlet Valve, with delayed refilling (saves up to 9 litres of water per day) and silent according to the NF standard category Class I
- Supplied with anti-condensation lining
- "A" class for the Water Efficiency in compliance with the ANQIP Authority requirements
- Supplied with anti-condensation lining
- Net for easier mortar adhesion

Hydroboost system

- Hydroelectric generator
- Storage temperature between: -25° and 65°C
- Degree of protection for the hydroelectric generator: IP67
- Degree of protection for the connection cable: IP67
- Small particle filter integrated in the generator inlet;
- Connection to the water supply
- Maximum pressure: <10bar;
- Operating pressure between: 0 and 10bar.
- Operating temperature between: -5° and 55°C.

The presence of a high percentage of limescale in water may cause obstructions in hydroelectric generator, leading to malfunction;

- Rechargeable Battery
- LiFePO4 rechargeable battery with energy management and protection circuit;
- Capacity: 2750mAh
- Supply voltage 6,5Vdc;
- 2 pole KCC compatible cables, for power supply and charging;

Sensor

- Operating temperature 0 – 70°C
- Degree of sensor protection: IP67
- Electronic connectors anti-error and waterproof: IP66
- Detection capacity - about 20mm
- LED signs

Accessories

- 1 Flush pipe Ø90 x 250
- 1 Seal for flush pipe Ø 125
- 1 Connecting pipe Ø 45 x 180
- 1 Pan rubber seal Ø 45
- 1 Protective box
- 1 G ½" stop valve
- 1 Protection sponge for the stop valve
- 1 Flush bend Ø 90 / 90 L230
- 1 Outlet bend and adaptor Ø90/110
- 1 Protection pipe Ø90

Fixing accessories for wall structure:

- 4 Galvanized screws M8x60
- 4 Galvanized washers M8 DIN 9021
- 4 Bushing M8

For fixing hung wc on the structure:

- 2 Threaded rods M12
- 2 Protection for threaded rod
- 2 Protection cover
- 2 Toilet centring washer
- 2 Nuts M12
- 2 Washers ø 34

Warranty

- Ten (10) years warranty according to the general selling terms, starting from the purchase date of the product.
- Two (2) years warranty to Hydroboost system, according to the general selling terms, starting from the purchase date of the product
- If the product is not correctly installed the warranty is not valid.

Observations

- There are available similar products. For more information please consult our Sanitary Installation Systems catalogue or our site www.oli-world.com